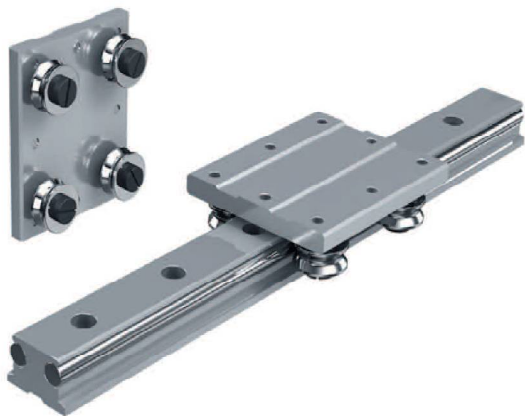


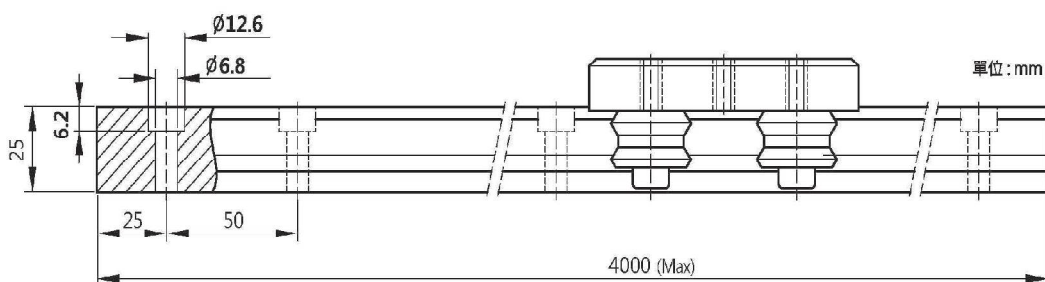
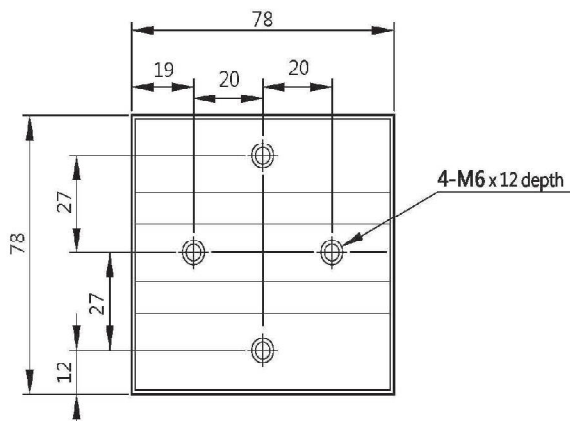
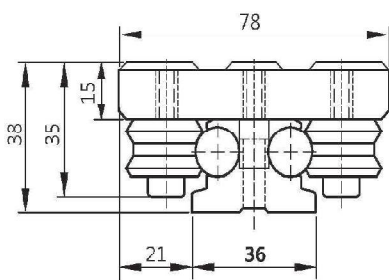
LGD-12E 雙軸心式滑軌 (不生鏽)

經濟型 ECONOMICAL TYPE

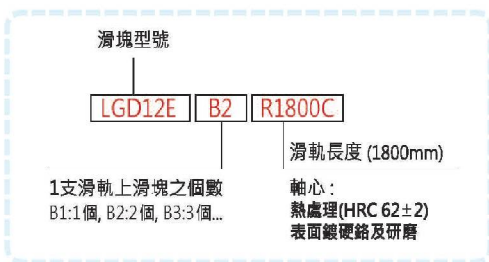
一個滑塊含4個滾輪軸承



雙軸心式滑軌系列
Shaft Type Linear Guide



雙軸心滑軌



軸徑 (mm)	基本動定格 荷重 C (kgf)	基本靜定格 荷重 Co (kgf)	容許靜力距			重量	
			To kgf-m	Tx kgf-m	Ty kgf-m	滑塊 kg	軌道 kg/m
12	140	230	4.3	3.2	3.8	0.36	3.2

