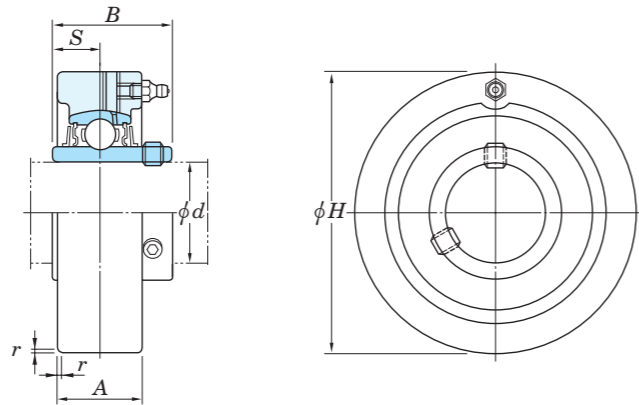


**Ball bearing units
cartridge type
UCC (with set screws)**
d 12 ~ 50 mm



Shaft dia. (mm) <i>d</i>	Dimensions (mm)					Unit No.	Housing No.	No.	Applicable bearing Basic load ratings (kN)		Factor <i>f</i> ₀	(Refer.) Unit mass (kg)
	<i>H</i>	<i>A</i>	<i>r</i>	<i>B</i>	<i>S</i>				<i>C</i> _r	<i>C</i> _{0r}		
12	72	20	1.5	31	12.7	UCC201	C204	UC201	12.8	6.65	13.2	0.52
15	72	20	1.5	31	12.7	UCC202	C204	UC202	12.8	6.65	13.2	0.50
17	72	20	1.5	31	12.7	UCC203	C204	UC203	12.8	6.65	13.2	0.49
20	72	20	1.5	31	12.7	UCC204	C204	UC204	12.8	6.65	13.2	0.47
25	80	22	1.5	34.1	14.3	UCC205	C205	UC205	14.0	7.85	13.9	0.64
	90	27	1.5	38.1	15.9	UCCX05	CX05	UCX05	19.5	11.3	13.9	1.0
	90	26	2	38	15	UCC305	C305	UC305	21.2	10.9	12.6	1.5
30	85	27	1.5	38.1	15.9	UCC206	C206	UC206	19.5	11.3	13.9	0.81
	100	30	2	42.9	17.5	UCCX06	CX06	UCX06	25.7	15.4	13.9	1.3
	100	28	2	43	17	UCC306	C306	UC306	26.7	15.0	13.3	1.7
35	90	28	2	42.9	17.5	UCC207	C207	UC207	25.7	15.4	13.9	0.93
	110	34	2	49.2	19	UCCX07	CX07	UCX07	29.1	17.8	14.0	1.7
	110	32	3	48	19	UCC307	C307	UC307	33.4	19.3	13.2	2.2
40	100	30	2	49.2	19	UCC208	C208	UC208	29.1	17.8	14.0	1.2
	120	38	2	49.2	19	UCCX08	CX08	UCX08	32.7	20.3	14.0	2.3
	120	34	3	52	19	UCC308	C308	UC308	40.7	24.0	13.2	2.2
45	110	31	2	49.2	19	UCC209	C209	UC209	32.7	20.3	14.0	1.5
	120	38	2	51.6	19	UCCX09	CX09	UCX09	35.1	23.3	14.4	2.3
	130	38	3	57	22	UCC309	C309	UC309	48.9	29.5	13.3	2.8
50	120	33	2	51.6	19	UCC210	C210	UC210	35.1	23.3	14.4	2.0
	130	40	2.5	55.6	22.2	UCCX10	CX10	UCX10	43.4	29.4	14.4	2.8
	140	40	3	61	22	UCC310	C310	UC310	62.0	38.3	13.2	3.2

- [Remarks] 1) Applicable sizes of grease nipples are shown below.
 A-1/4-28UNF 201~213, X05~X12, 305~308
 A-PT 1/8 309~328
 2) For bearings with double- or triple-lip seals, unit and bearing number are suffixed by L2 or L3.
 (UCC206JL3, UC206L3)
 3) For more detailed information, refer to ball bearing for unit specification tables.

d 55 ~ 130 mm

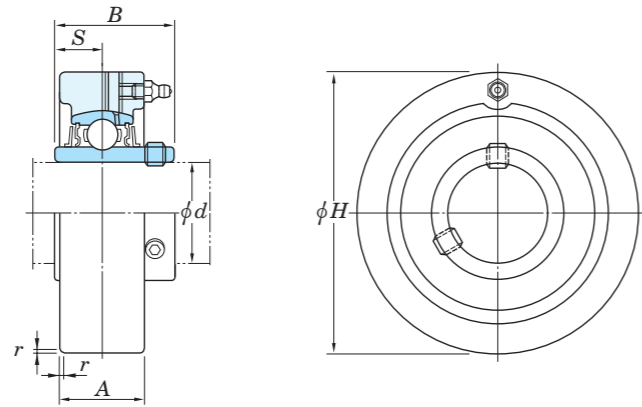
Tolerances for housing

housing No.			ΔH_s	ΔA_s	Y
C204~C205			0 -0.030	±0.2	0.2
C206~C210	CX05~CX08 C305~C308		0 -0.035		
C211~C213	CX09~CX10 C309~C310		0 -0.040	±0.3	0.3
	CX11~CX12 C311~C314		0 -0.046		
	C315~C318 C319		0 -0.052		0.4
	C320~C322 C324~C328		0 -0.057		

unit : mm
 ΔH_s : deviation of outside diameter.
 ΔA_s : deviation of width.
 Y : circumferential runout tolerances of outside diameter in respect to shaft straight line of spherical bearing seating.

Shaft dia. (mm) <i>d</i>	Dimensions (mm)					Unit No.	Housing No.	No.	Applicable bearing Basic load ratings (kN)		Factor <i>f</i> ₀	(Refer.) Unit mass (kg)
	<i>H</i>	<i>A</i>	<i>r</i>	<i>B</i>	<i>S</i>				<i>C</i> _r	<i>C</i> _{0r}		
55	125	35	2.5	55.6	22.2	UCC211	C211	UC211	43.4	29.4	14.4	2.2
	150	42	2.5	65.1	25.4	UCCX11	CX11	UCX11	52.4	36.2	14.4	4.0
	150	44	3	66	25	UCC311	C311	UC311	71.6	45.0	13.2	3.9
60	130	38	2.5	65.1	25.4	UCC212	C212	UC212	52.4	36.2	14.4	2.6
	160	44	2.5	65.1	25.4	UCCX12	CX12	UCX12	57.2	40.1	14.4	4.6
	160	46	3	71	26	UCC312	C312	UC312	81.9	52.2	13.2	4.8
65	140	40	2.5	65.1	25.4	UCC213	C213	UC213	57.2	40.1	14.4	3.0
	170	50	3	75	30	UCC313	C313	UC313	92.7	59.9	13.2	5.7
70	180	52	3	78	33	UCC314	C314	UC314	104	68.2	13.2	6.7
75	190	55	4	82	32	UCC315	C315	UC315	113	77.2	13.2	7.8
80	200	60	4	86	34	UCC316	C316	UC316	123	86.7	13.3	9.2
85	215	64	4	96	40	UCC317	C317	UC317	133	96.8	13.3	11.7
90	225	66	4	96	40	UCC318	C318	UC318	143	107	13.3	13.1
95	240	72	4	103	41	UCC319	C319	UC319	153	119	13.3	15.8
100	260	75	4	108	42	UCC320	C320	UC320	173	141	13.2	19.6
105	260	75	4	112	44	UCC321	C321	UC321	184	153	13.2	27.0
110	300	80	5	117	46	UCC322	C322	UC322	205	180	13.2	29.2
120	320	90	5	126	51	UCC324	C324	UC324	207	185	13.5	35.9
130	340	100	6	135	54	UCC326	C326	UC326	229	214	13.6	43.0

**Ball bearing units
cartridge type
UCC (with set screws)**
 d 140 mm



Shaft dia. (mm) d	Dimensions (mm)					Unit No.	Housing No.	No.	Applicable bearing		Factor f_0	(Refer.) Unit mass (kg)
	H	A	r	B	S				C_r	C_{0r}		
140	360	100	6	145	59	UCC328	C328	UC328	253	246	13.6	52.9

- [Remarks]
- Applicable sizes of grease nipples are shown below.
 A-1/4-28UNF 201~213, X05~X12, 305~308
 A-PT 1/8 309~328
 - For bearings with double- or triple-lip seals, unit and bearing number are suffixed by L2 or L3.
(UCC206JL3, UC206L3)
 - For more detailed information, refer to ball bearing for unit specification tables.

Tolerances for housing

unit : mm

housing No.			ΔH_s	ΔA_s	Y
C204~ C205			0 -0.030	±0.2	0.2
C206~ C210	CX05~ CX08	C305~ C308	0 -0.035		
	CX09~ CX10	C309~ C310	0 -0.040	±0.3	0.3
C211~ C213	CX11~ CX12	C311~ C314	0 -0.046		
		C315~ C318 C319	0 -0.052		
		C320~ C322 C324~ C328	0 -0.057		

ΔH_s : deviation of outside diameter.
 ΔA_s : deviation of width.
 Y : circumferential runout tolerances of outside diameter in respect to shaft straight line of spherical bearing seating.

